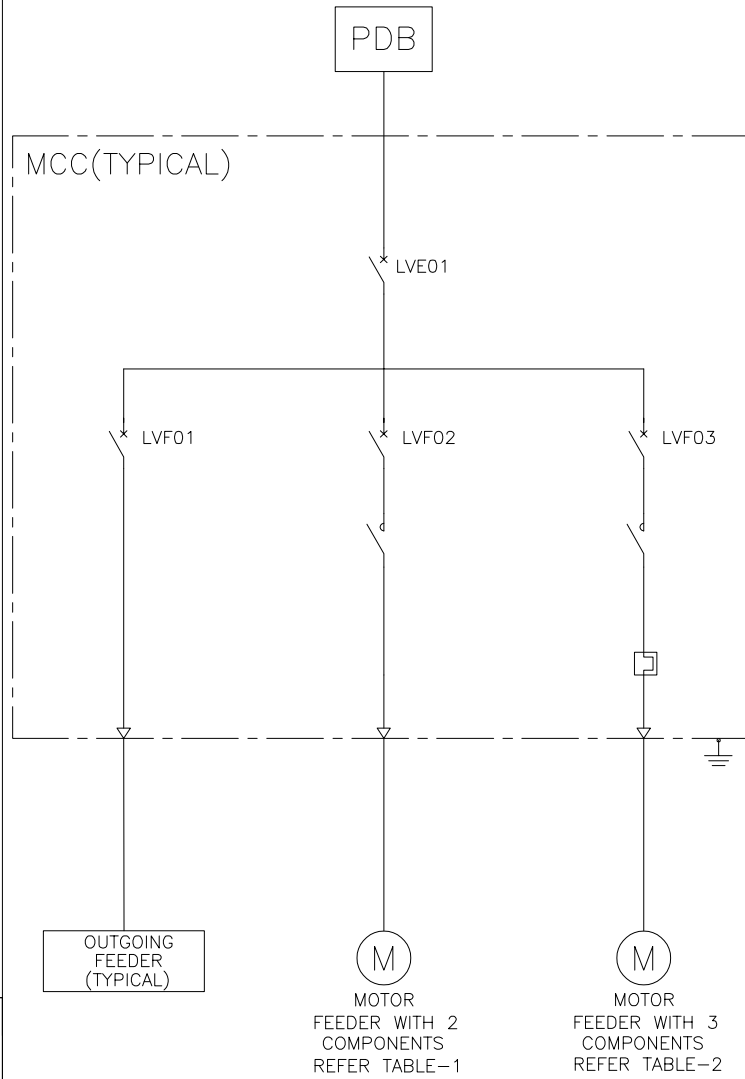


NOTE:
1. RATING WILL BE BASED ON UTILITY POWER INPUT.

BILL OF MATERIAL		
SL.NO	DESCRIPTION	QUANTITY
1	MEDIUM VOLTAGE SWITCHGEAR 12KV 20KA/3S	1NO.
2	OIL-IMMERSED TRANSFORMER, GROUND MOUNTED 800KVA, 12KV/400V	1NO.
3	CIRCUIT BREAKER (ACB) EASYPACT MVS AIR CIRCUIT BREAKER MVS16C, ET6G, 1600A	1NO.
4	CIRCUIT BREAKER (ACB) EASYPACT MVS AIR CIRCUIT BREAKER MVS10C, ET6G, 1000A	2NOs.
5	CIRCUIT BREAKER (MCCB) EASYPACT CVS MOLDED CASE CIRCUIT BREAKER WITH VIGI MODULE FOR EARTH-LEAKAGE PROTECTION CVS630F,500A	2NOs.
6	CIRCUIT BREAKER (MCCB) EASYPACT CVS MOLDED CASE CIRCUIT BREAKER WITH VIGI MODULE FOR EARTH-LEAKAGE PROTECTION CVS400F,400A	1NO.
7	CIRCUIT BREAKER (MCCB) EASYPACT CVS MOLDED CASE CIRCUIT BREAKER WITH VIGI MODULE FOR EARTH-LEAKAGE PROTECTION CVS160B,125A	1NO.
8	CIRCUIT BREAKER (MCCB) EASYPACT CVS MOLDED CASE CIRCUIT BREAKER CVS100B,100A	2NOs.
9	CIRCUIT BREAKER (MCCB) EASYPACT CVS MOLDED CASE CIRCUIT BREAKER CVS100B,63A	2NOs.
10	CIRCUIT BREAKER (MCCB) EASYPACT CVS MOLDED CASE CIRCUIT BREAKER CVS100B,40A	3NOs.
11	CIRCUIT BREAKER (MCCB) EASYPACT CVS MOLDED CASE CIRCUIT BREAKER CVS100B,16A	1NO.
12	AUTOMATIC CONTROLLER - BA	1NO.
13	EASY UPS UNINTERRUPTIBLE POWER SUPPLY 3S 10KVA 400V	1NO.
14	EASYLOGIC PFC CAPACITOR BANK 250KVAR	1NO.
15	EASYLOGIC PM1000H/2000 SERIES	8NOs.
16	PANEL SERVER	2NOs.
17	EASYCOM	1NO.
18	PowerLogic P1 RELAY	1NO.

LEGEND	
SYMBOL	DESCRIPTION
	CIRCUIT BREAKER
	SWITCH DISCONNECTOR/EARTHING DISCONNECTOR
	FUSE
	GENERATOR
	OPERATED BY MOTOR
	AUTOMATIC CONTROLLER - BA
	EARTH
	PROPAGATION IN 1 DIRECTION
	LOCALIZATION
	POWER TRANSFORMER
	DELTA 3 PHASES WINDING
	STAR 3 PHASES WINDING
	CURRENT TRANSFORMER
	DISTRIBUTION BOARD
	CAPACITOR BANK
	CROSS REFERENCE
	CABLE
	BUSWAY
	3 CONDUCTORS WITH PROTECTIVE CONDUCTOR
	3 CONDUCTORS WITH NEUTRAL AND PROTECTIVE CONDUCTOR

DESCRIPTION COMMUNICATION CONNECTION	
	ETHERNET TECHNICAL LAN CONNECTION
	MODBUS CONNECTION
	HARDWIRED CONNECTION
	WIRELESS (ZIGBEE) CONNECTION
	WIRELESS THERMAL SENSOR
	WIRELESS THERMAL AND HUMIDITY SENSOR



0.37KW TO 55KW :TYPE 1 COORDINATION											
MOTOR DATA:							CIRCUIT-BREAKER			CONTACTOR	
P(KW)	Ie(A) 380V	Ie(A) 400/415V	Iq 400/415V	P(KW)	Ie(A) 440V	Iq 440V	REFERENCE	SETTING	Irm(A)	REFERENCE	
0.37	1.2	1.1	50	0.37	1	50	GZ1E06	1..1,6	13	LC1E09	
0.55	1.6	1.5	50	0.55	1.36	50	GZ1E06	1..1,6	22.5	LC1E09	
0.75	2	1.8	50	0.75	1.68	50	GZ1E07	1,6..2,5	33.5	LC1E09	
1.1	2.8	2.6	50				GZ1E08	2,5..4	33.5	LC1E09	
				1.1	2.37	50	GZ1E07	1,6..2,5	33.5	LC1E09	
1.5	3.7	3.4	50	1.5	3.06	50	GZ1E08	2,5..4	51	LC1E09	
2.2	5.3	4.8	50	2.2	4.4	50	GZ1E10	4..6,3	78	LC1E09	
3	7	6.5	50				GZ1E14	6..10	138	LC1E09	
				3	5.77	50	GZ1E10	4..6,3	78	LC1E09	
4	9	8.2	50	4	7.9	15	GZ1E14	6..10	138	LC1E09	
5.5	12	11	15	5.5	10.4	8	GZ1E16	9..14	170	LC1E12	
7.5	16	14	15	7.5	13.7	8	GZ1E20	13..18	223	LC1E18	
10	21	19	15				GZ1E21	17..23	327	LC1E25	
11	23	21	15	11	20.1	6	GZ1E22	20..25	327	LC1E25	
15	30	28	15	15	26.5	6	GZ1E32	24..32	416	LC1E32	
18.5	37	34	50	18.5	32.5	50	GV3P40	30..40	560	LC1E40	
22	43	40	50	22	39	50	GV3P50	37..50	700	LC1E50	
30	59	55	50				GV3P65	48..65	910	LC1E65	
				30	51.5	50	GV3P65	48..65		LC1E65	
37	72	66	50	37	64	50	GV3P73	62..73	1120	LC1E80	
45		80	100	45	76	70	GV4P115N	65..115	1300	LC1E95	
55	105	100	100	55	90	70	GV4P115N	65..115	1500	LC1E120	

NOTE: Contactor up sizing is recommended for frequent startup / heavy DOL starting requirements. For such requirements, kindly connect with Schneider Electric representatives

0.37KW TO 250KW :TYPE 1 COORDINATION												
MOTOR DATA:							CIRCUIT BREAKER:			CONTACTOR	OVERLOAD RELAY	
P(KW)	le(A) 380V	le(A) 400/415V	Iq 400/415V	P(KW)	le(A) 440V	Iq 440V	Type	SETTING	Irm(A)		O/L	I _{rt}
0.37	1.2	1.1	50	0.37	1	50	GZ1LE06	1..1,6	13	LC1E09	LRE06	1..1.16
0.55	1.6	1.5	50	0.55	1.36	50	GZ1LE06	1..1,6	22.5	LC1E09	LRE06	1..1.16
0.75	2	1.8	50	0.75	1.68	50	GZ1LE07	1,6..2,5	33.5	LC1E09	LRE07	1,6..2.5
1.1	2.8	2.6	50				GZ1LE08	2,5..4	33.5	LC1E09	LRE08	2,5..4
				1.1	2.37	50	GZ1LE07	1,6..2,5	33.5	LC1E09	LRE07	1,6..2,5
1.5	3.7	3.4	50	1.5	3.06	50	GZ1LE08	2,5..4	51	LC1E09	LRE08	2,5..4
2.2	5.3	4.8	50	2.2	4.4	50	GZ1LE10	4..6,3	78	LC1E09	LRE10	4..6
3	7	6.5	50	3	5.77	50	GZ1LE14	6..10	138	LC1E09	LRE12	5,5..8
4	9	8.2	50	4	7.9	15	GZ1LE14	6..10	138	LC1E09	LRE14	7..10
5.5	12	11	15	5.5	10.4	8	GZ1LE16	9..14	170	LC1E12	LRE16	9..13
7.5	16	14	15	7.5	13.7	8	GZ1LE20	13..18	223	LC1E18	LRE21	12..18
11	23	21	15	11	20.1	6	GZ1LE22	20..25	327	LC1E25	LRE22	16..24
15	30	28	15	15	26.5	6	GZ1LE32	24..32	416	LC1E32	LRE32	23..32
18.5	37	34	50	18.5	32.5	50	GV3L40	30..40	560	LC1E40	LRE355	30..40
22	43	40	50	22	39	50	GV3L50	37..50	700	LC1E50	LRE357	37..50
30	59	55	50	30	51.5	50	GV3L65	48..65	910	LC1E65	LRE359	48..65
37	72	66	50	37	64	50	GV3L73	62..73	1120	LC1E80	LRE363	63..80
45	85	80	100				CVS100-MA	6..14	1300	LC1E95	LRE365	80..104
				45	76	70	CVS100-MA	6..14	1300	LC1E95	LRE363	63..80
55	105	100	100	55	90	70	CVS160-MA	9..14	1500	LC1E120	LRE482	84..135
75	140	135		75	125		CVS160-MA	9..14	1950	LC1E200	LRE483	124..198
90	170	160		90	146		CVS250-MA	9..14	2420	LC1E200	LRE484	146..234
110	210	200		110	178		CVS250-MA	9..14	2860	LC1E250	LRE484	146..234
							CVS400-MA	6..13	3500	LC1E250	LRE484	146..234
132	250	230		132	215		CVS400-MA	6..13	3500	LC1E300	LRE485	174..279
160	300	270		160	256		CVS400-MA	6..13	4160	LC1E300	LRE486	208..333
200	380	361		200	321		CVS630-MA	6..13	5700	LC1E400	LRE487	259..414
220	420	380		220	353		CVS630-MA	6..13	6500	LC1E500	LRE488	321..513
250	460	430		250	401		CVS630-MA	6..13	6500	LC1E500	LRE488	321..514

NOTE: Contactor up sizing is recommended for frequent startup / heavy DOL starting requirements. For such requirements, kindly connect with Schneider Electric representatives

All technical information contained in this document is the exclusive property of SCHNEIDER ELECTRIC INDUSTRIES SAS and may neither be used nor disclosed without its prior written consent. Only those drawings and diagrams remitted after order booking are binding for execution. All devices shown in this diagram are in open position, drawn out, with operating mechanisms discharged and all power sources off.

Les informations techniques contenues dans ce document sont la propriété exclusive de SCHNEIDER ELECTRIC INDUSTRIES SAS et ne peuvent être utilisées ou divulguées à des tiers quels qu'ils soient sans accord écrit. Seuls nous engageons pour exécution les plans et schémas remis après enregistrement de la commande. Les appareils représentés sur ce schéma sont en position ouvert desarmés - débouchés - toutes sources coupées.

02	21-03-2024	Revised issue					
01	27-03-2023	Revised issue					
00	22-04-2022	First issue					
Rev	Date	Modification					

SUPERMARKET
EASY REFERENCE ARCHITECTURE



SUPERMARKET		02
ESXPERA013EN	Rev 02	Sheet 002/00